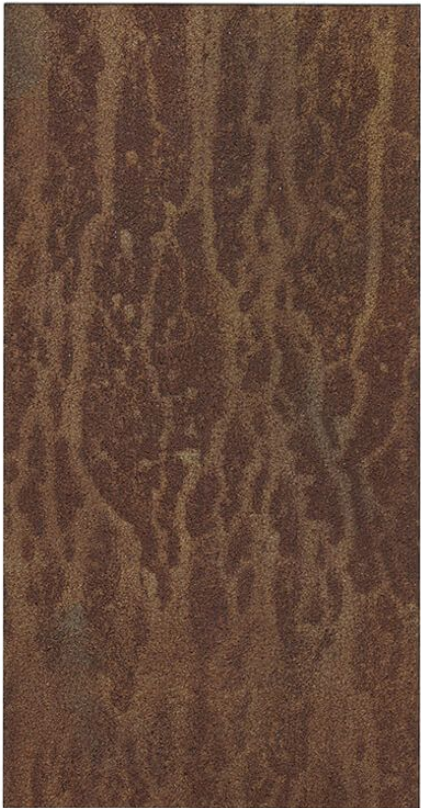


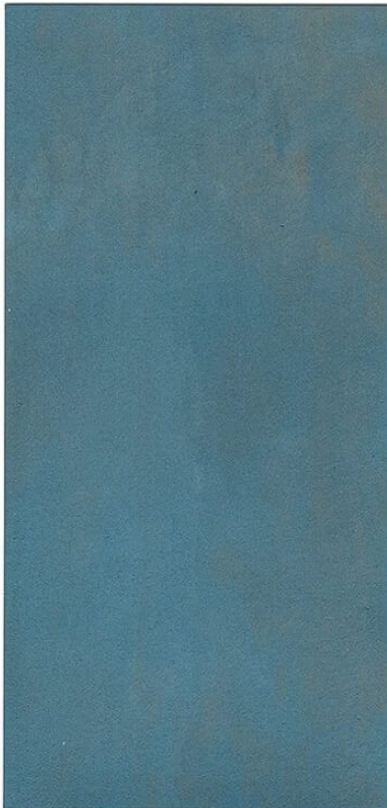
Effetto, effect Corten Dilavato



Forma s.340 tinta 0255 - Roccidati 3910002 / 0271 - Caduro 0195 / M490 / M46S



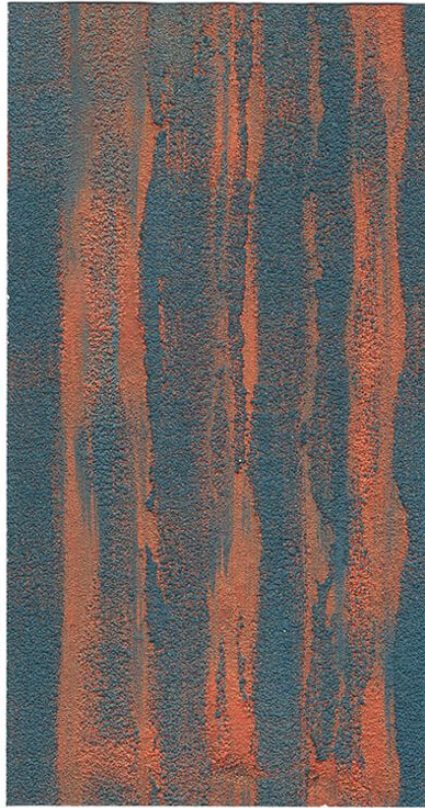
Effetto, effect Rame Ossidato Fine



Forma s.3400019 - Caduro M490 / M477



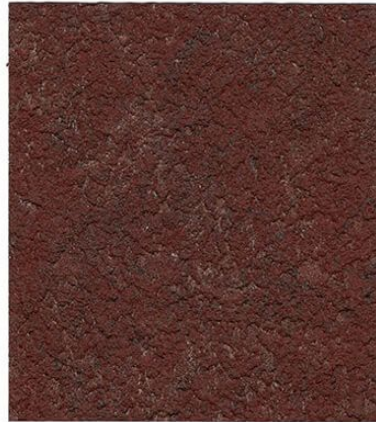
Effetto, effect Rame Ossidato



Forma s.3400019 - Caduro M490 / M477



Effetto, effect Ferro Ossidato



Ossidato Rosso: Forma s.340 tinta 0235 - Roccidati 3910002 / 0271 / 0270



Ossidato Scuro: Forma s.340 tinta 0260 - Roccidati 3910002 / 0271 / 0270



EFFETTI RAME E RUGGINE

EFFETTI RAME E RUGGINE

# ROXIDAN

INTERIOR DECORATIVE FINISH WITH OXIDIZED EFFECT

series 391

## DESCRIPTION

ROXIDAN finishes achieve a metallic decorative waxed effect that reproduces the very typical oxidized appearance of substrates aged by the atmospheric agents.

Any wall or wooden surface decorated with ROXIDAN Perla assumes the real and material look of iron in the "Corten" effect.

With ROXIDAN Platino are achieved waxed effects of a light gray colour that features many non-ferrous metals.

According to the method of application, the use of ROXIDAN over the base coat FORMA allows the creation of textures with a strong aesthetic impact, with particular chromatic nuances and pleasant irregularities to the touch, quickly and easily.

## INSTRUCTIONS FOR USE

May be applied on:

- New and old plasters based on hydraulic binders.
  - Concrete surfaces.
  - Gypsum and gypsumboard surfaces.
  - Old paints and wall coatings that are organic or mineral in nature, dry, compact, absorbent and cohesive.
  - Wooden surfaces, fibreboard, plywood and the like.
- Surfaces should be adequately prepared according to the instructions given in the paragraph 'PREPARING THE SURFACE'.

Do not apply on freshly painted surfaces.

## TECHNICAL SPECIFICATIONS

- Type of Binder: Acrylic copolymer in an aqueous dispersion
- Pigments and extender: Metallic pigments
- Specific gravity per EN ISO 2811-1:  
Perla 3910001:  $1.13 \pm 0.05$  kg/l  
Platino 3910002:  $1.02 \pm 0.05$  kg/l
- Viscosity per UNI 8902:  $26000 \pm 4000$  cps at 25°C (Brookfield viscometer)
- Drying time (at 25°C and 65% R.H.): to touch in 30 min; to recoat after 2 hours.

## PREPARING THE SURFACE

For the decoration with ROXIDAN Perla substrates must be properly prepared applying ROXIDAN FONDO cod. 3920019 (until stock lasts) or the new decorative base coat putty FORMA series 340.

For decoration with ROXIDAN Platino substrates must be properly prepared by applying the decorative base coat putty FORMA series 340.

Refer to the data sheet.

## APPLICATION INSTRUCTIONS

- Conditions of the environment and the substrate:  
Air temperature: Min. +8 °C / Max. +35 °C  
Relative humidity of the air: <75%  
Temperature of the substrate: Min. +5 °C / Max. +35 °C  
Moisture of the substrate: <10%
- Tools: stainless steel trowel, brush or sponge.

- N coats: on surfaces prepared with FORMA apply 1 coat of ROXIDAN (Perla or Platino). On surfaces prepared with ROXIDAN FONDO apply 2 coats of ROXIDAN Perla.
- Dilution: ready to use.

Methods of application for ROXIDAN Perla over ROXIDAN FONDO:

- Wait at least 8 hours after the application of ROXIDAN FONDO properly worked.
- Apply on the entire surface ROXIDAN by spreading it with stainless steel trowel.
- Immediately rework the surface with a steel trowel eliminating the excesses of product.
- Wait 1-2 minutes and refinish the surface with a steel trowel by using it with the flat side to create with the tool some rotations in opposite directions.
- After 2 hours proceed to the application of the second coat following the same procedures.

Method of application for ROXIDAN Platino and Perla over FORMA:

- Wait at least 4 hours after the application of FORMA properly worked.
- Apply on the entire surface ROXIDAN Platino or Perla by spreading it with steel trowel, brush or sponge.
- Immediately rework the surface with the tool eliminating the excesses of product.
- Wait 1-2 minutes and finish the surface again with the tool.
- Only for the effects that make this necessary it might proceed after 2 hours to the application of the second coat following the same procedures.

- Clean the tools with water immediately after use.
- Approximate spreading rate: 8-10 m<sup>2</sup>/l per coat, depending upon the choosed effect. This spreading rate refers to smooth substrates with medium absorption. The actual spreading rate should therefore be determined by performing a preliminary test on the specific substrate.

## TINTING

The product is available in the base Perla (0001) and Platino (0002) and can also be used as a ready colour. Colours are obtained using the Marcromie Tinting System. If different batches are used, it is recommended that the various batches be mixed together in order to avoid any slight differences in shade in the pre-made colours.

## STORAGE

Maximum storage temperature: +30°C  
Minimum storage temperature: +5°C  
The product should be preferably used within 2 years from date of manufacture when stored in original unopened containers and in appropriate temperature conditions.

## SAFETY RULES

Limit value EU (Dir. 2004/42/EC)  
Cat. A/I: Decorative effect coatings (water-base): 200 g/l (2010)

# ROXIDAN

INTERIOR DECORATIVE FINISH WITH OXIDIZED EFFECT

**series 391**

ROXIDAN Contains max: 200 g/l VOC

The product must be used in accordance with the current hygiene and safety regulations; after use, do not litter, let residues dry out completely and treat them as special waste. Keep out of the reach of children. If swallowed, seek medical advice immediately and show the container or label. Do not empty into drains, flowing water or onto the ground.

Consult the safety data sheet for additional information.

## **SPECIFICATION ITEM**

Decorative finish with oxidized effect for indoor use.

Applications, on previously prepared interior surfaces with FORMA or ROXIDAN FONDO of the decorative coating ROXIDAN series 391, based on an acrylic copolymer in water emulsion and metallic pigments, in 1-2 coats in the desired effect.

Supply and application of the material € ..... sqm.

*COLORIFICIO SAN MARCO guarantees that the information herein is provided to the best of its technical and scientific knowledge and based on its experience; nonetheless, the company may not be held liable for the results obtained using these products, as application conditions are beyond its control. It is recommended to always make sure that the product is suited to each specific instance. The present sheet voids and replaces any previously existing sheets. For further technical information call the technical service +39 041 4569322.*