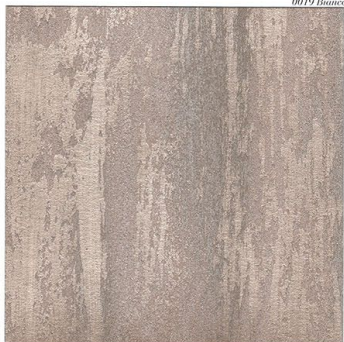




M019 Bianco



Effetto Aqua M010 / M001

MARCOPOLO LUXURY



M059 M060 M061 M062



Base alluminio M063 M064 M065



M066 M067 M068 Base argento



M069 M070 M071 M072



M073 M074 M075 M076



M001 M002 M003 M004



M005 M006 M007 M008



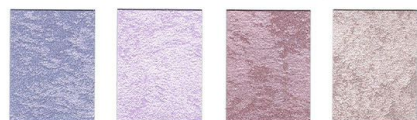
M009 M010 M011 M012



M013 M014 M015 M016



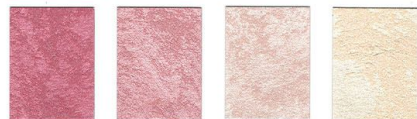
M017 M018 M019 M020



M021 M022 M023 M024



M025 M026 M027 M028



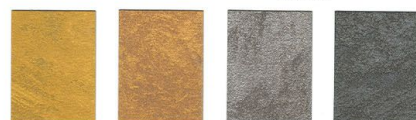
M029 M030 M031 M032



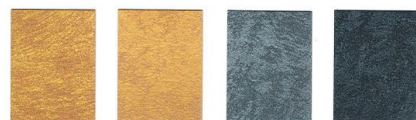
M033 M034 M035 M036



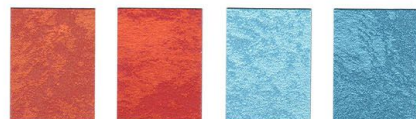
M037 M038 M039 M040



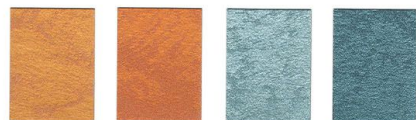
M041 M042 M049 M050



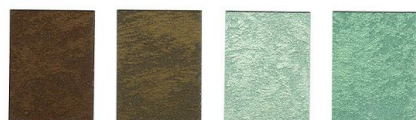
Base oro scabbino Base oro M051 M052



M043 M044 M053 M054



M045 M046 M055 M056



M047 M048 M057 M058



La serie di basi sono applicabile nel "sistema RECAL". Per i colori e le basi sono applicabile in "RECAL".  
 Les séries de bases sont applicables dans le "système RECAL". Pour les couleurs et les bases sont applicables en "RECAL".

# MARCOPOLO LUXURY

DECORATIVE FINISH WITH UNREFINED FINE METAL EFFECT FOR INTERIORS

series 020

## DESCRIPTION

MARCOPOLO LUXURY is a decorative finish for interiors capable of realizing prestigious surfaces with a beautiful metallic fine effect, for pleasant ambience and charming both classic and with a modern design. The composition, enriched with special pigments creates surfaces characterized by strong contrasts of brightness which vary according to the light incidence.

With easy application can be obtained many aesthetic effects, light plays and reflections which can satisfy any aesthetic requirements. MARCOPOLO LUXURY combines a high aesthetic value to an elevated resistance to the stresses to which a wall is subjected over time.

## INSTRUCTIONS FOR USE

May be applied on:

- New and old plasters based on hydraulic binders.
- Concrete surfaces.
- Surfaces plaster and plasterboard.
- Old paints and coatings that are organic or mineral, dry, compact, absorbent and cohesive.
- Conglomerates of various kinds provided mineral absorption.

Surfaces should be adequately prepared by following the procedures in the paragraph 'PREPARING THE SURFACE'.

Do not apply on freshly painted surfaces.

## TECHNICAL SPECIFICATIONS

- Type of Binder: acrylic copolymer in water emulsion
- Pigments: Metal pearls
- Solvent: water
- Density UNI EN ISO 2811-1: 0.98 - 1.10 kg / l depending on color.
- Viscosity of packaging:  
Silver and aluminum: 26000 ± 3000 cps  
Gold: 18000 ± 3000 cps
- Drying (at 25 °C and 65% RH): to touch one hour.

## PREPARING THE SURFACE

Wall surfaces:

- Make sure that the surface is thoroughly dried and ripened. If not, resurface or consolidate using specific products.

- In presence of mold, treat the surface with COMBAT 222. 4810222, and with COMBAT 333 reconstruction cod. 4810333. If necessary additivate the product with the sanitizer COMBAT 444 cod. 4810444.

- Brush or wash any efflorescence and any old peeling paint. Completely eliminate any raised layers of lime-based or tempera.

- Remove any dust, smog or other deposits by brushing.

- Level any irregularities in the surface and treat holes, cracks and gaps with TAMSTUCCO 9400006/9410110.

Use adequate sealants to seal any cracks.

- Sand putty and touch-ups with sandpaper to remove the dust.

- Do any smoothing with the plaster RASAMIX 9440160 or

9450150 or BETOMARC RASOMARC 9500150 according to the type of surface.

- Fixing with a coat of water-based acrylic wall fixative IDROFIS 4700006 or micronized solvent-free fixative ATOMO 8840001.

- Apply at least two coats of DECORFOND 3880019 diluted 30-35% with water, using a roller or brush to obtain a homogeneous ideal support for the application. It 'not recommended the use of other funds.

- Apply MARCOPOLO LUXURY as indicated by the application instructions.

\* (The dilution of the fixative and amounts to be applied depend on the absorption of the surface and should be determined through preliminary tests on the specific support - Refer to the data sheet).

## APPLICATION INSTRUCTIONS

- Environment and Support conditions:

Air temperature: Min +8 ° C / +35 ° C

Relative humidity: <75%

Surface Temperature: Min +5 ° C / +35 ° C

Moisture: <10%

- Tools: brush and sponge.

- Number of coats: 1

- Dilution: ready to use, can be diluted with water up to 5% according to the aesthetic effect sought.

Application Procedure:

.Distribute MARCOPOLO with brush unevenly.

.When the product is partially dry with a soft sponge or just wet and by brush type "Spalter" non regular zones of accumulation. At a total drying will be highlighted the characteristic LUXURY effect.

- Tools should be cleaned immediately after use with water.

- Indicative spreading rate: 4-6 sqm/l finished work and refers to smooth and average absorption. And 'advisable to determine the actual yield a preliminary test on the specific surface.

## TINTING

The product is available in the ready mixed colors and can also be used as a basis tinting, silver (0070), aluminum (0170), Gold (0190).

The coloring is obtainable via the Marcromie color matching. It is also possible to tint the product with COLORADO series 548 colorants.

In case of using multiple batches it is recommended to remix the various products together to avoid slight differences in shading.

## STORAGE

Maximum storage temperature: +30 ° C

Minimum storage temperature: +5 ° C

The product should be used preferably within 2 years from date of manufacture when stored in original unopened containers and in appropriate temperature conditions.

## SAFETY RULES

EU limit value (Dir. 2004/42/EC)

# MARCOPOLO LUXURY

DECORATIVE FINISH WITH UNREFINED FINE METAL EFFECT FOR INTERIORS

**series 020**

Cat A/I: decorative effect coatings (water-based): 200 g/l (2010)

MARCOPOLO LUXURY Contains max: 200 g/l VOC

The product does not require labeling in accordance with the regulations in force. Use the product according to current standards of hygiene and safety after use, do not litter containers, allow the residue to dry and treat them as special waste. Keep out of the reach of children. If swallowed, seek medical advice immediately and show this container or label. Do not empty into drains, water courses or onto the ground.

For more information see the safety data sheet.

## **SPECIFICATION ITEM**

Decorative finish with unrefined fine metal effect for indoor use.

Applications, on previously prepared interior surfaces, decorative wall covering MARCOPOLO LUXURY series 020 based on acrylic copolymer in aqueous emulsion, in a single coat in accordance with the yield indicated.

Supply and installation of the material € ..... per square meter.

*COLORIFICIO SAN MARCO guarantees that the information herein is provided to the best of its technical and scientific knowledge and based on its experience; nonetheless, the company may not be held liable for the results obtained using these products, as application conditions are beyond its control. It is recommended to always make sure that the product is suited to each specific instance. The present sheet voids and replaces any previously existing sheets. For further technical information call the technical service +39 041 4569322.*